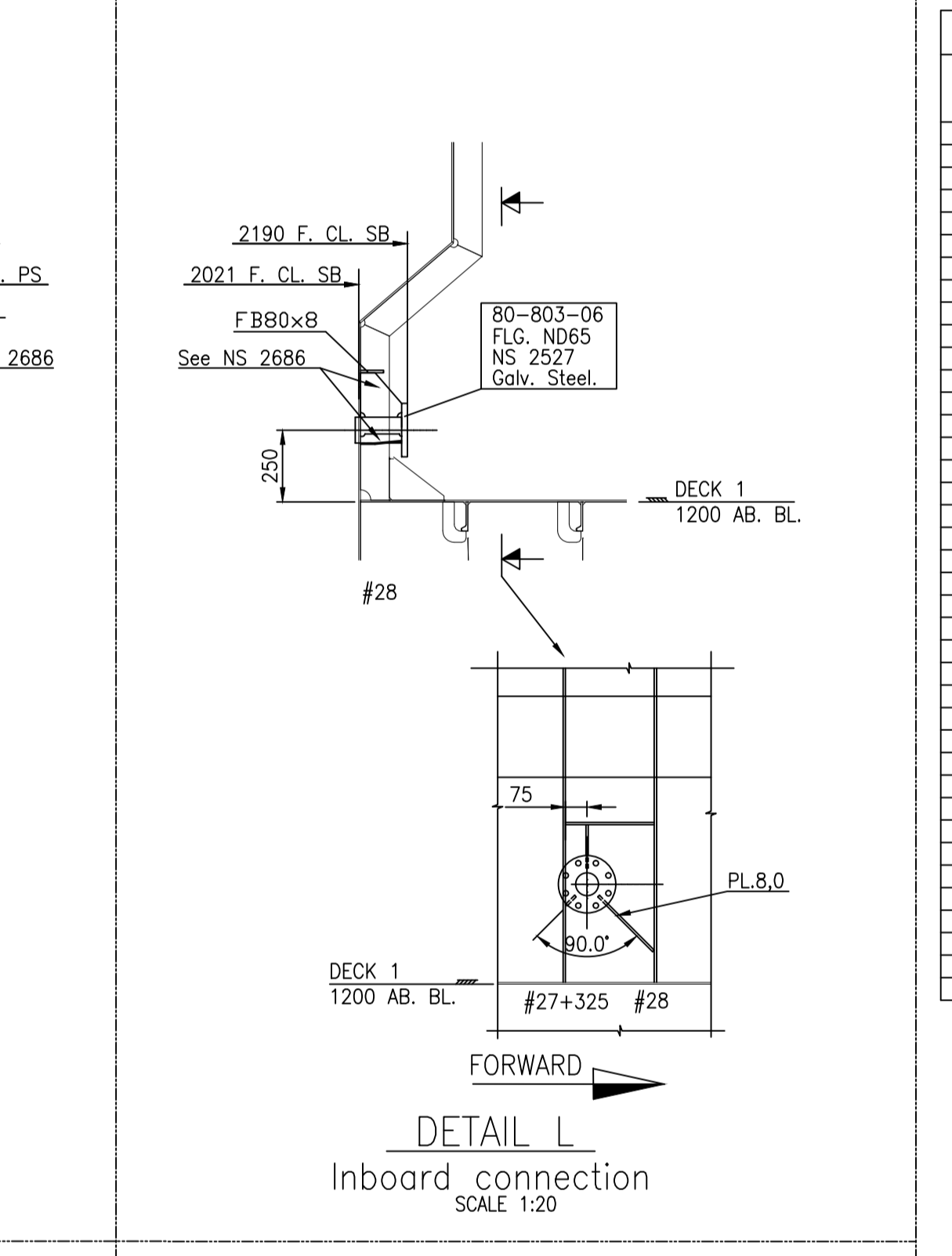
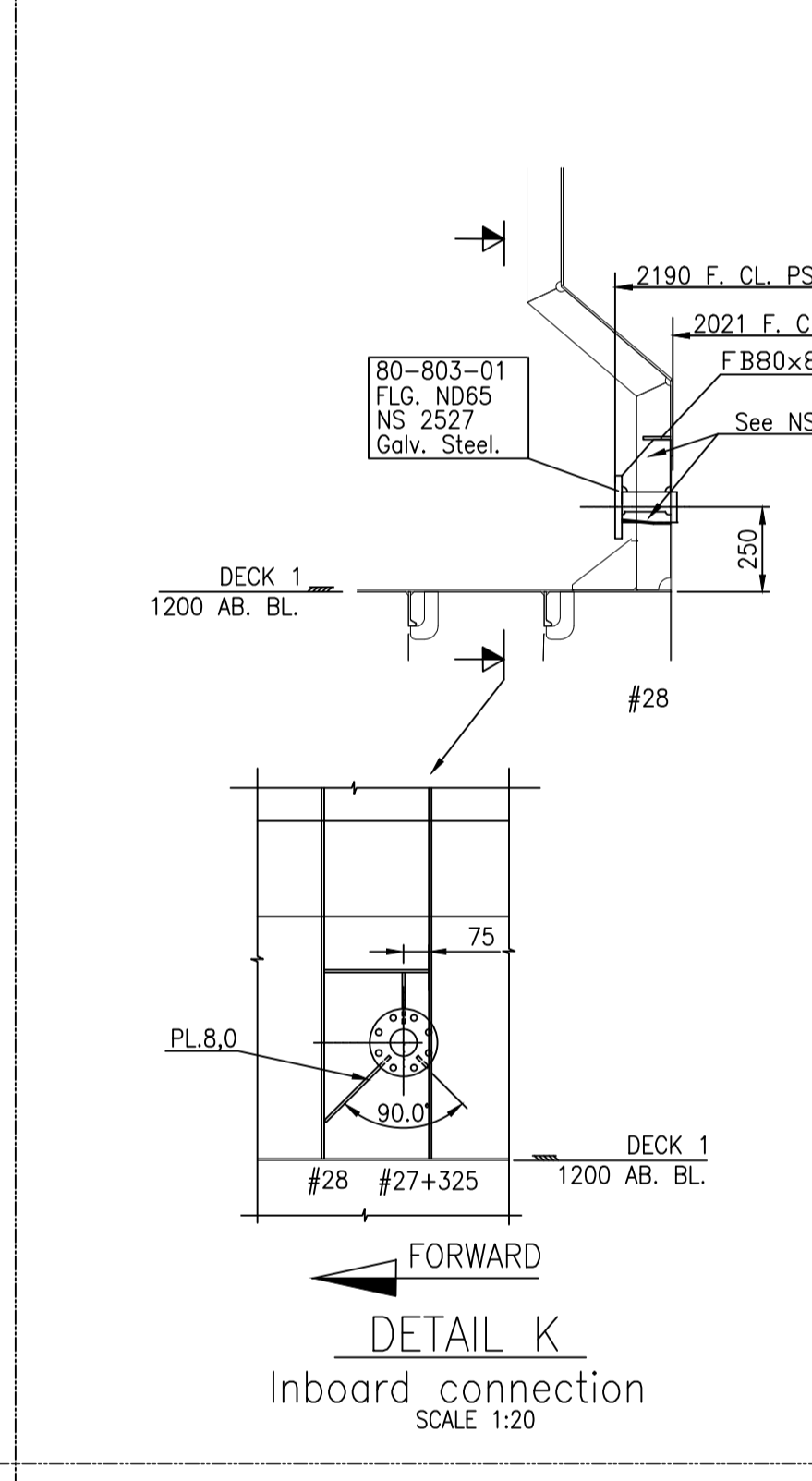
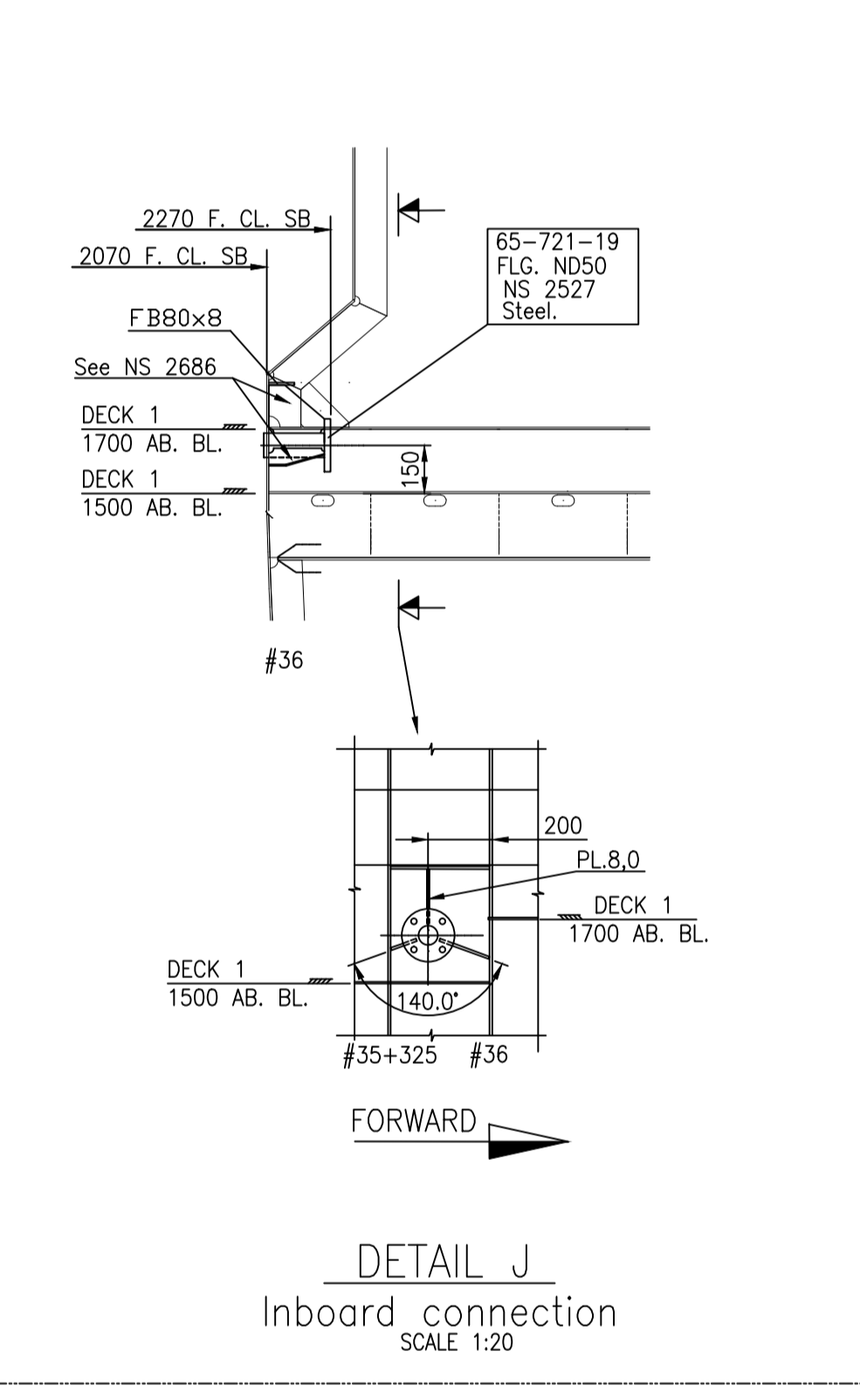
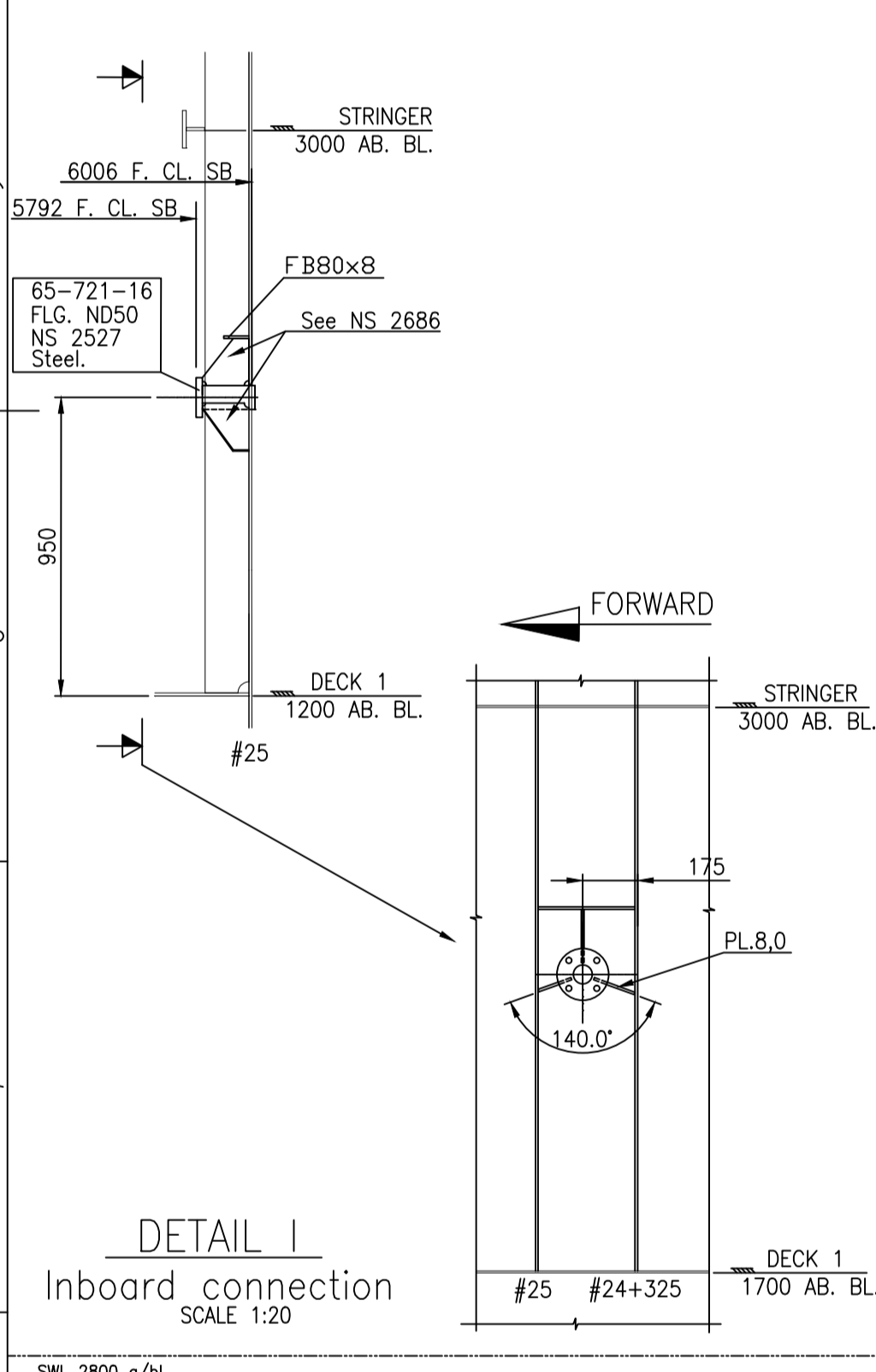
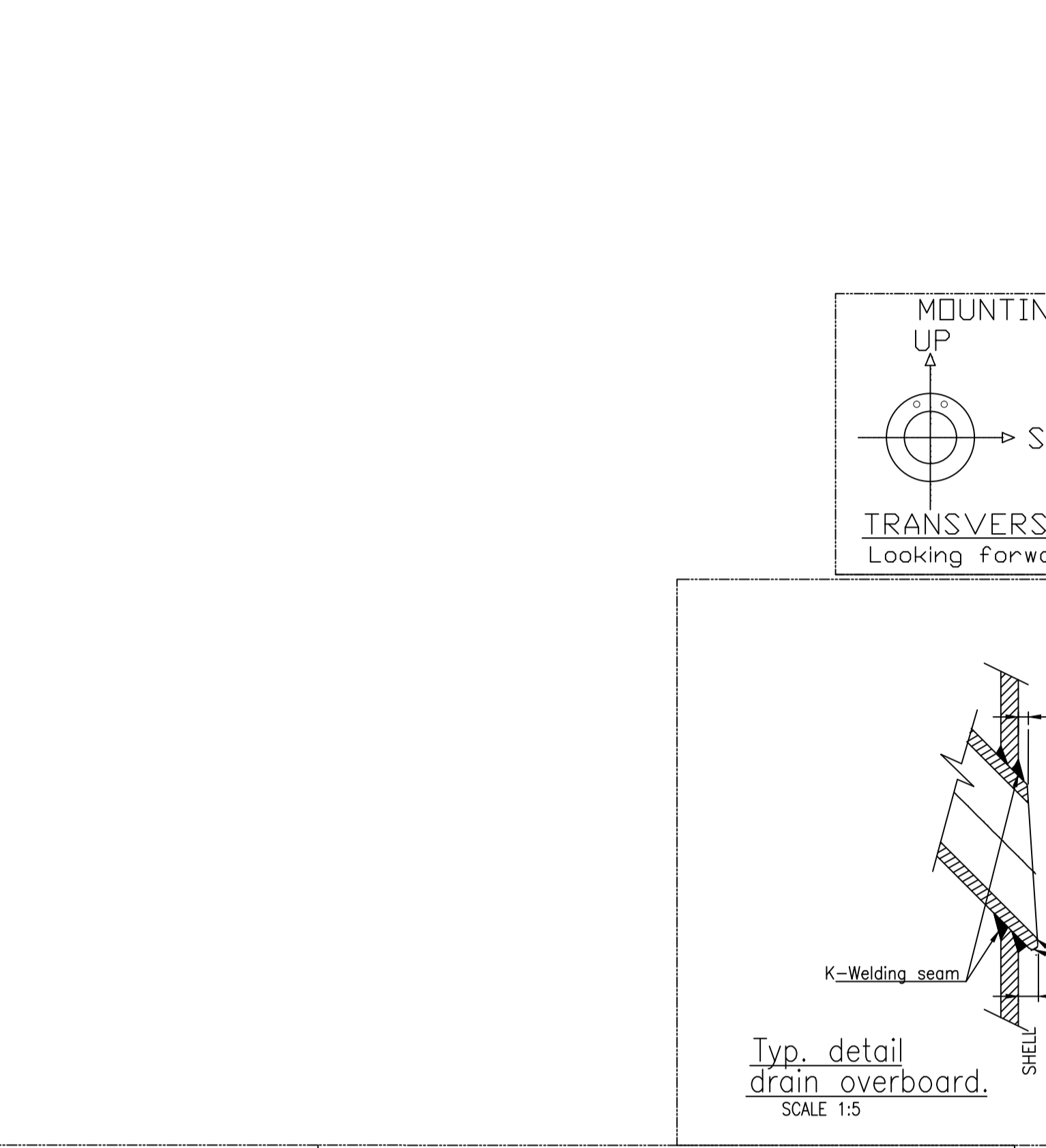
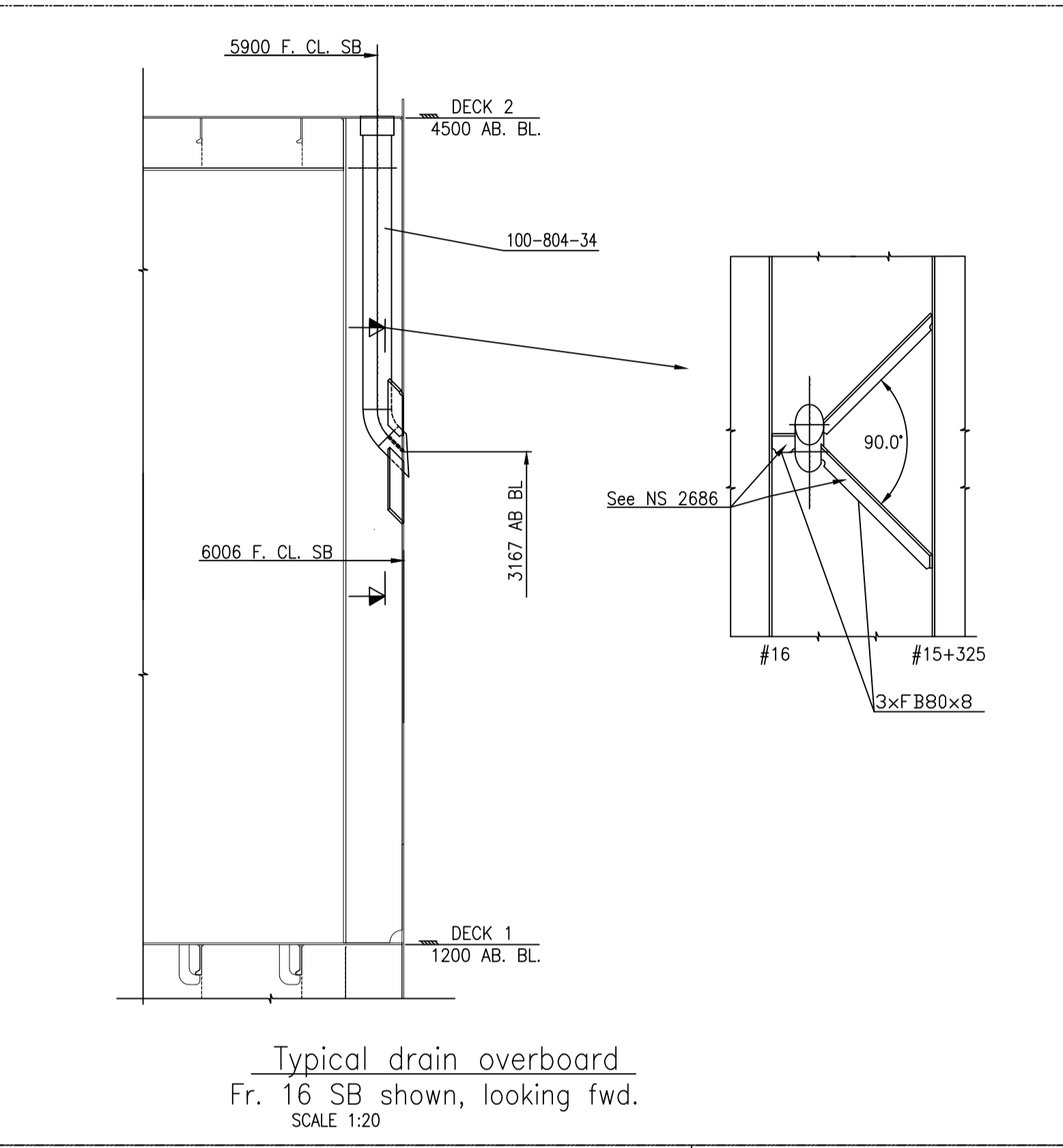
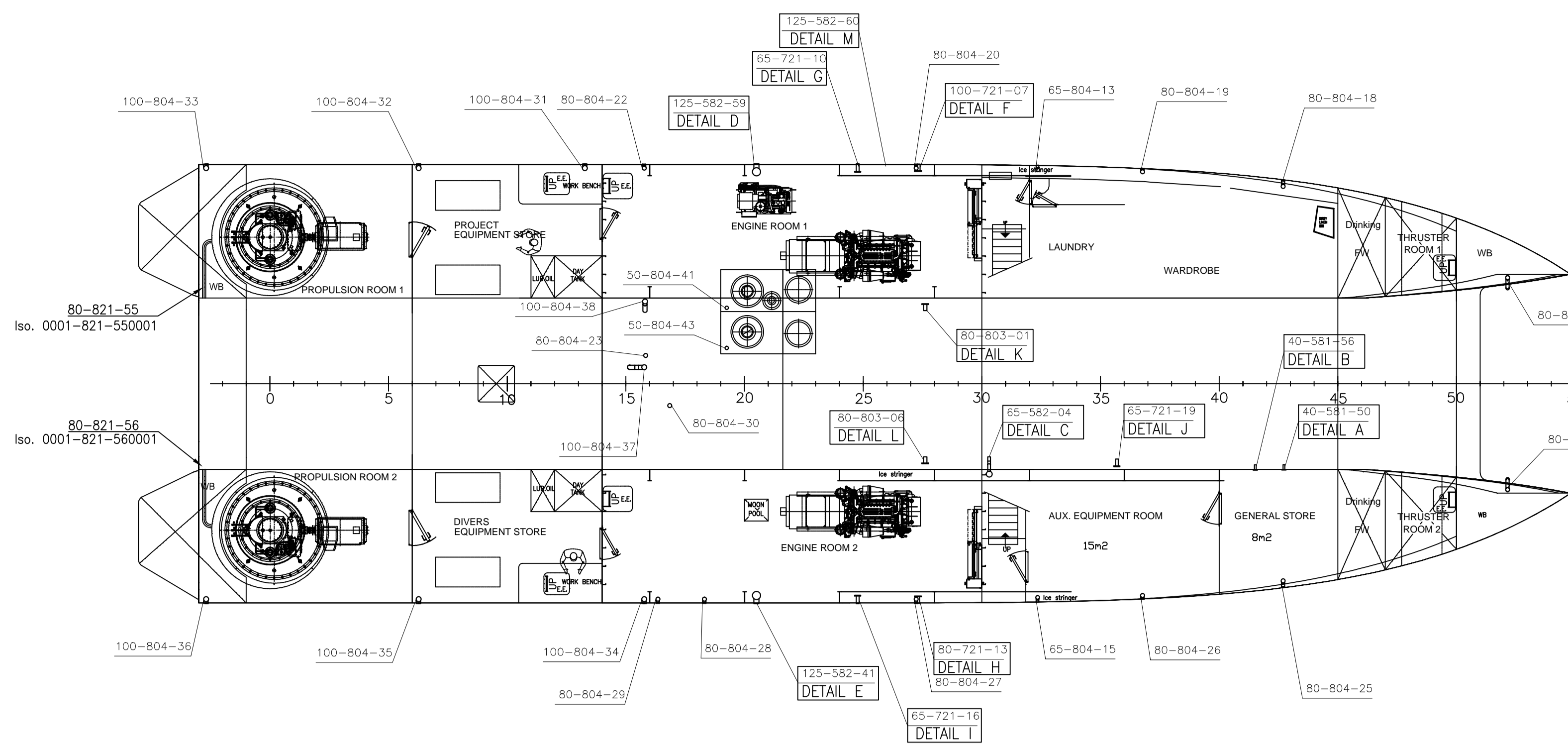
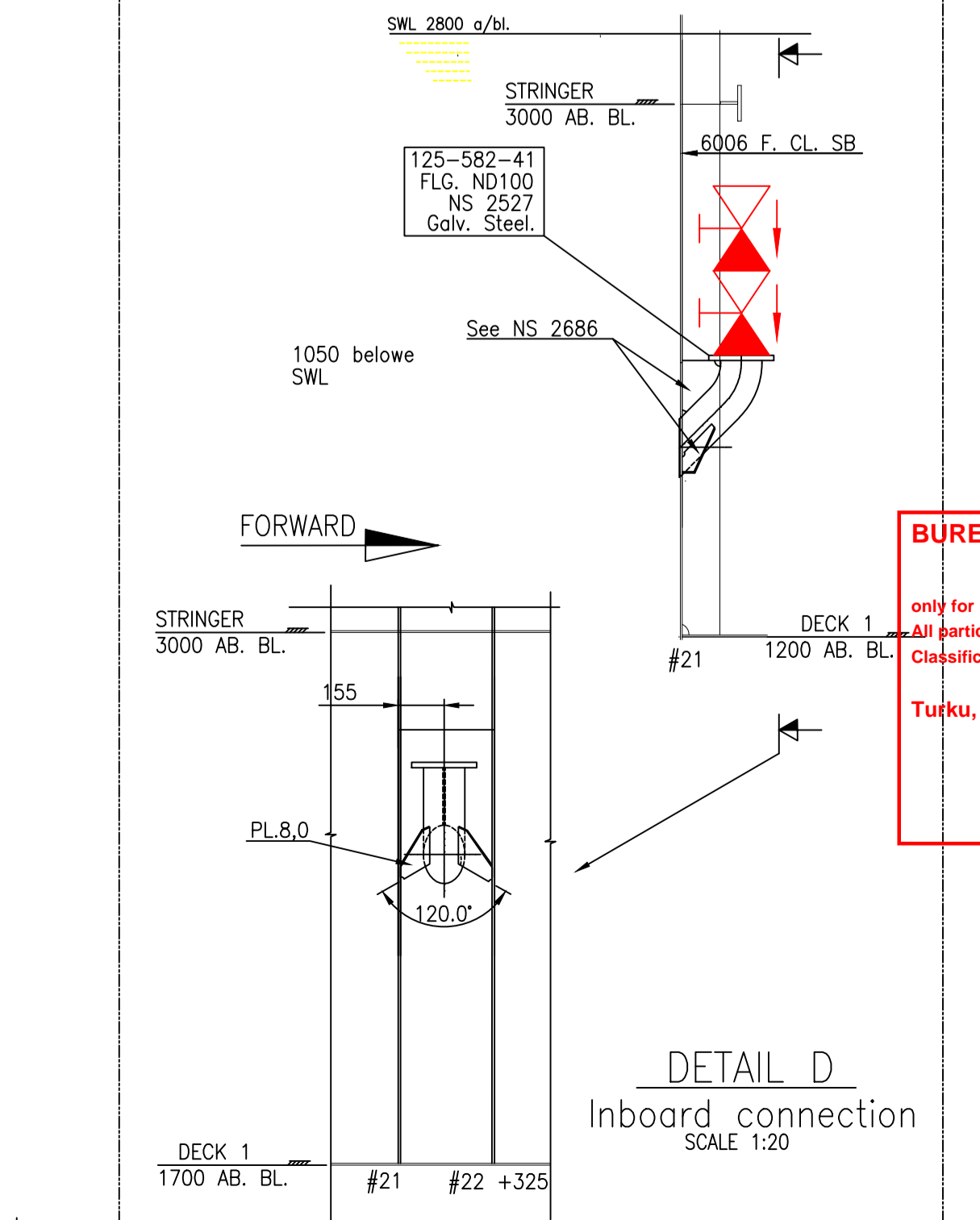
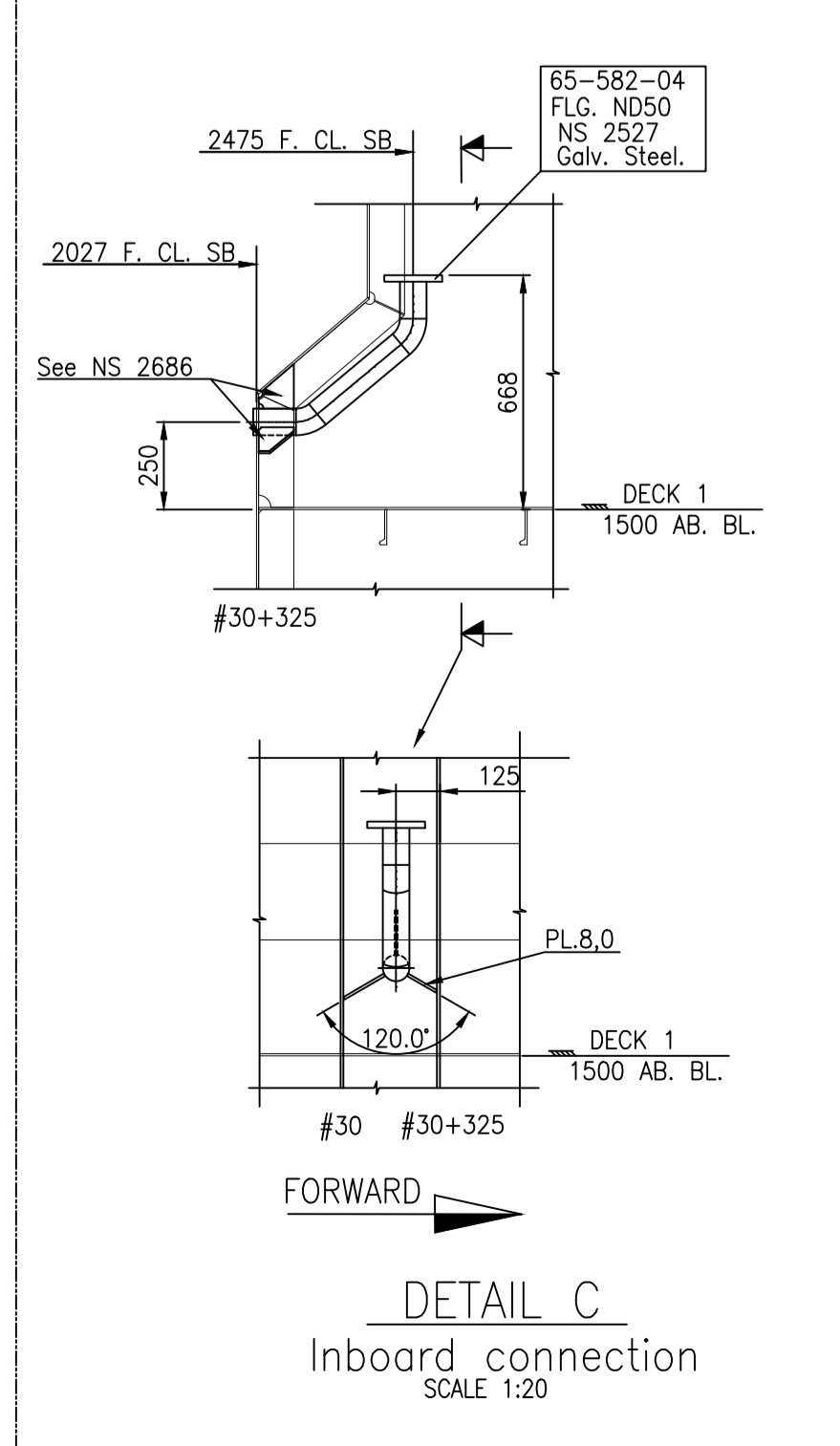
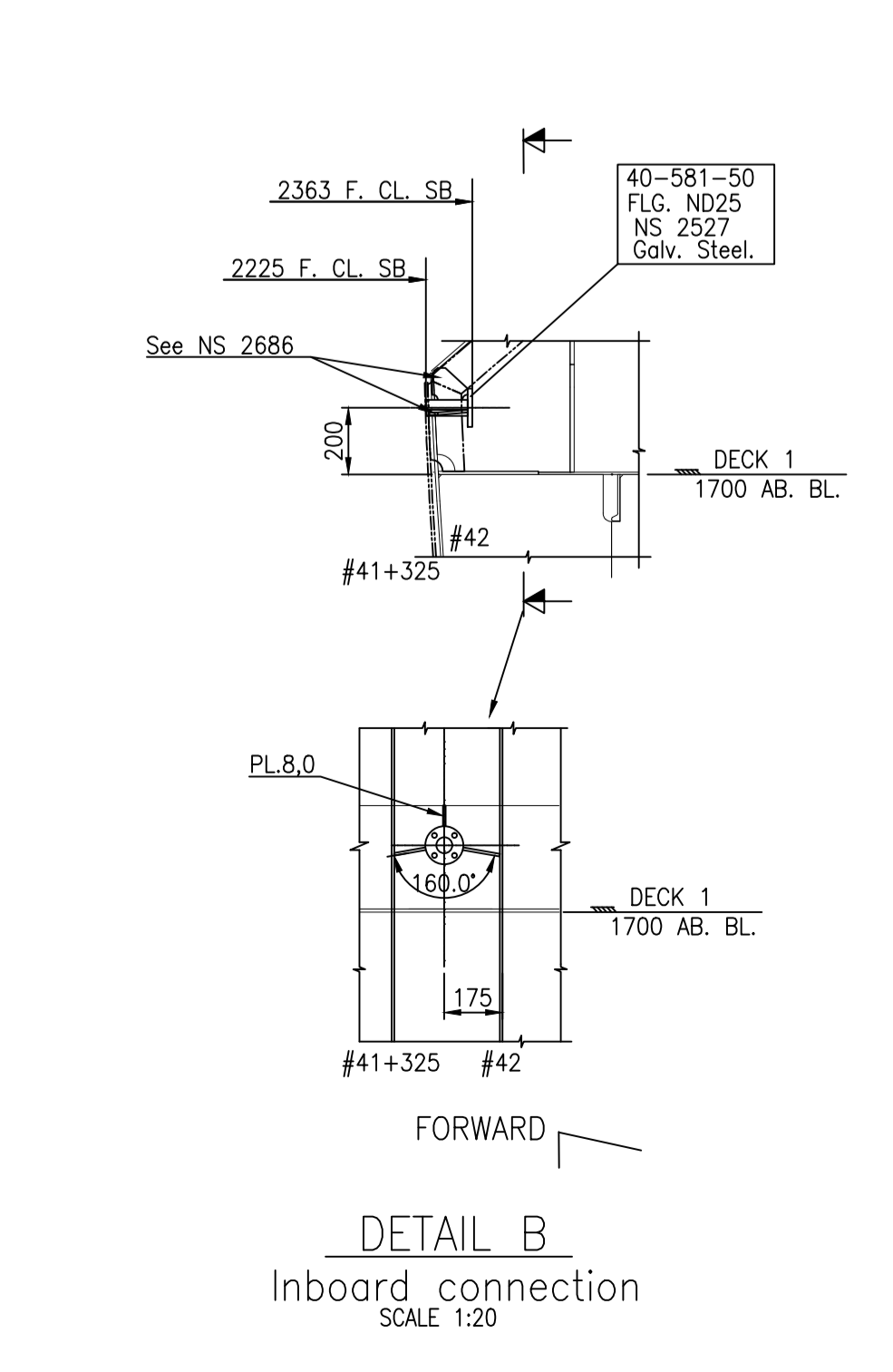
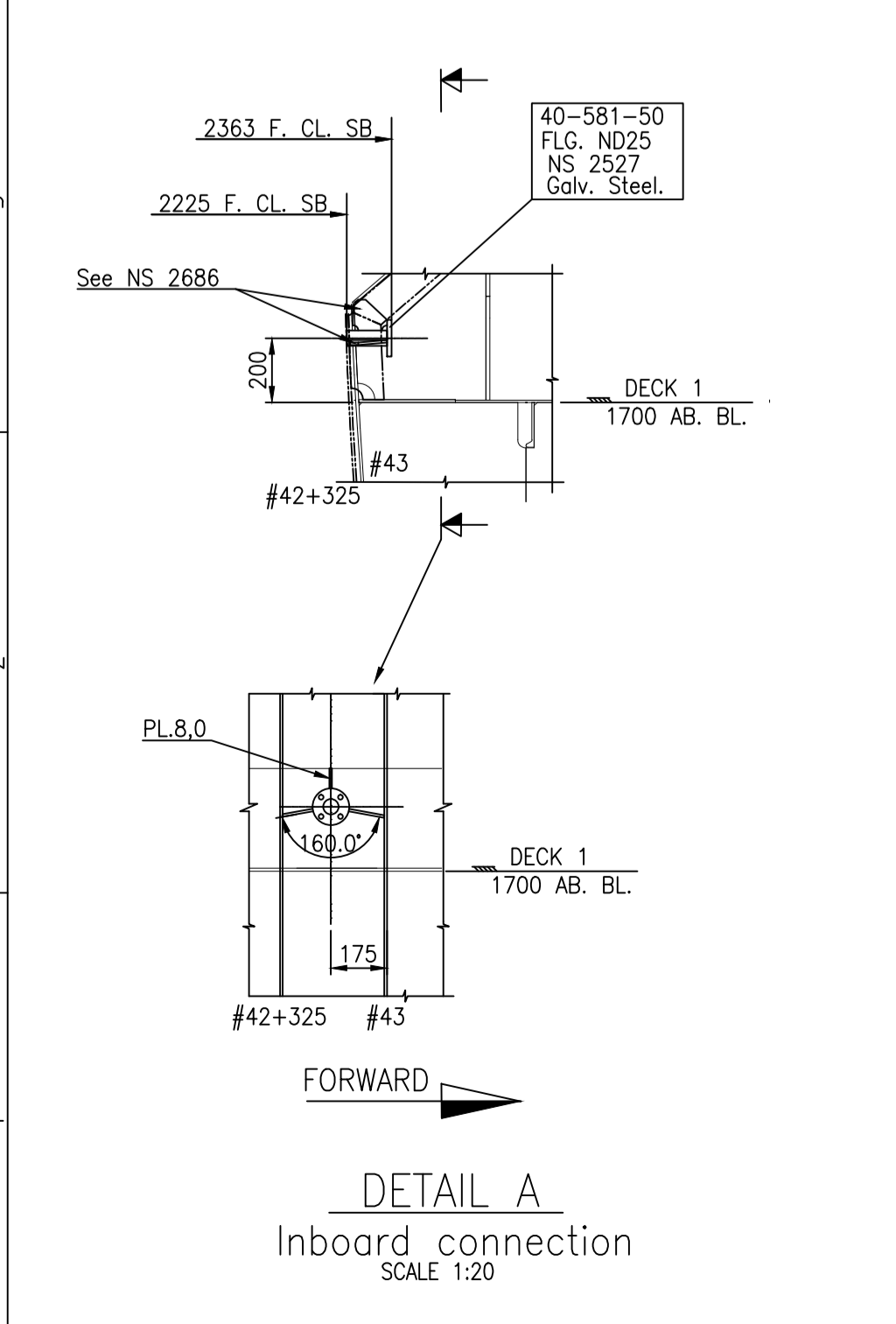
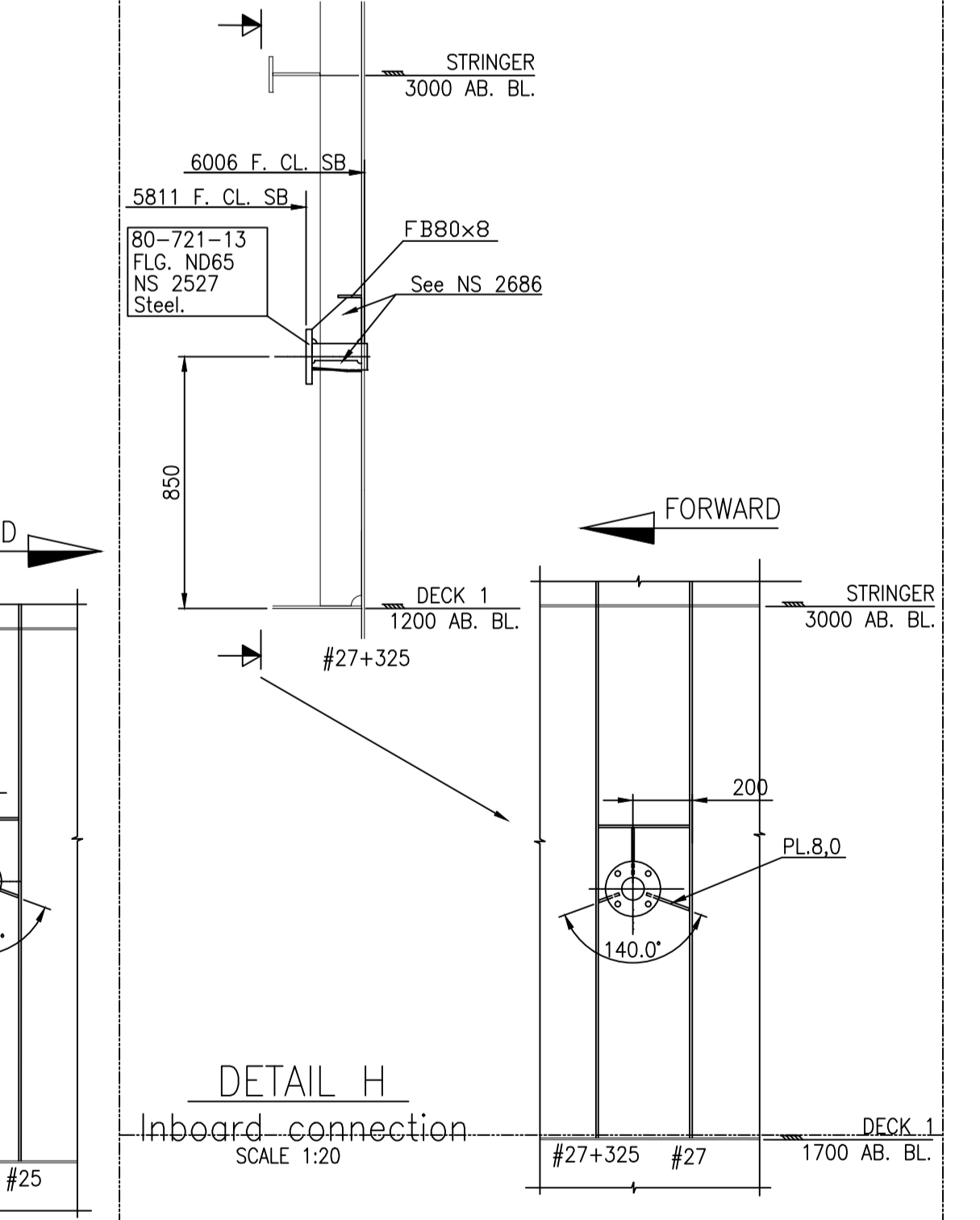
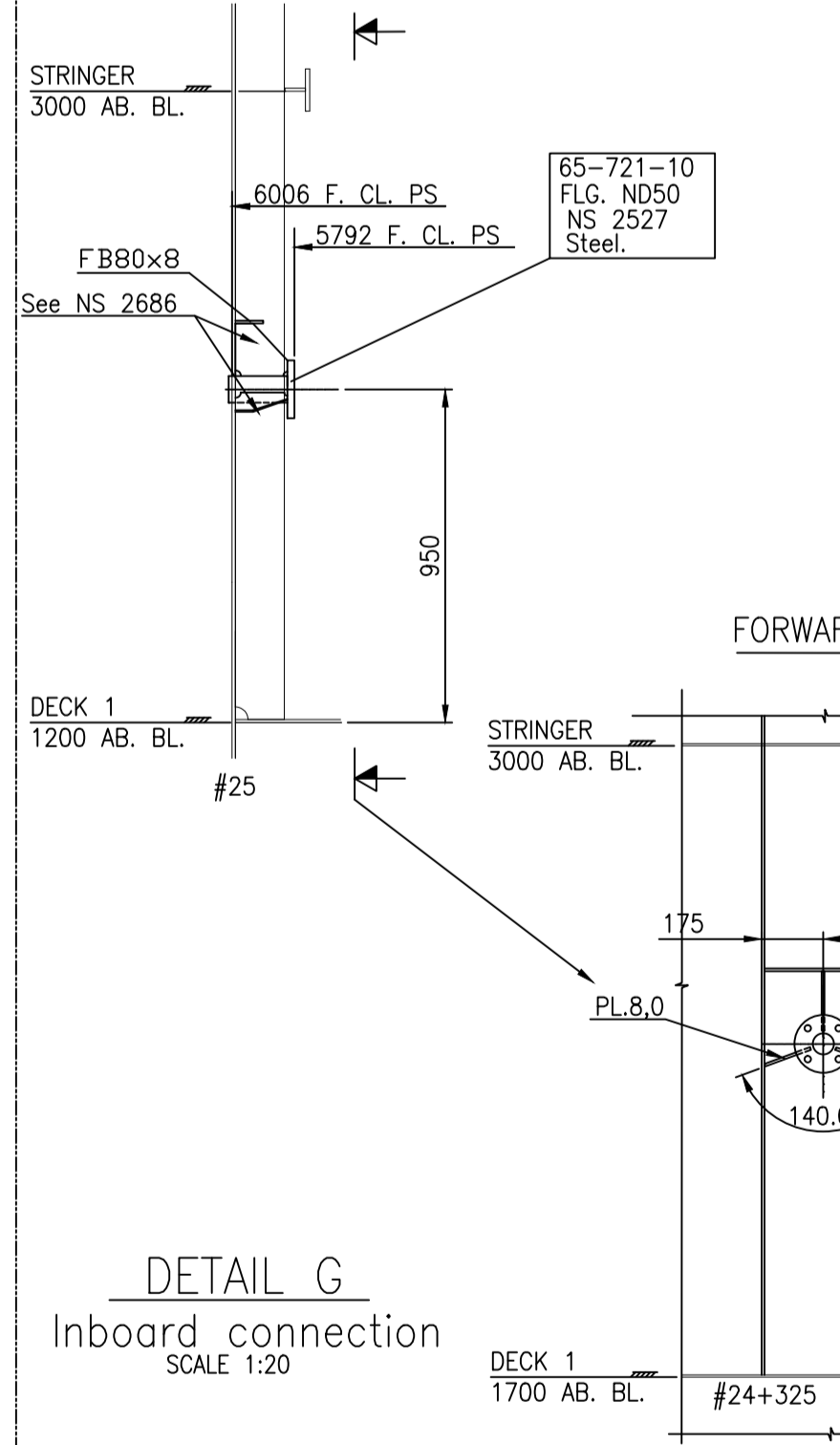
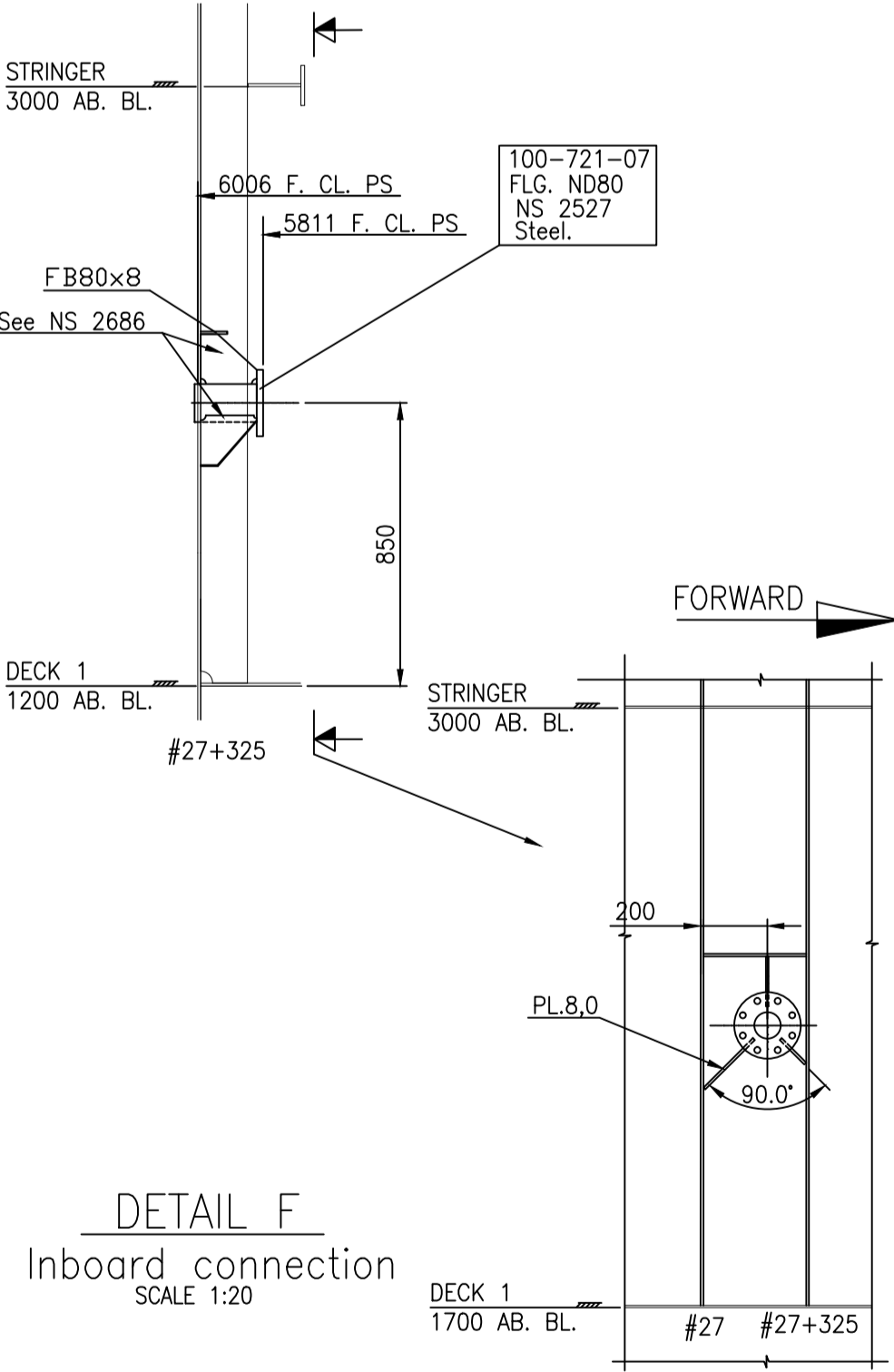
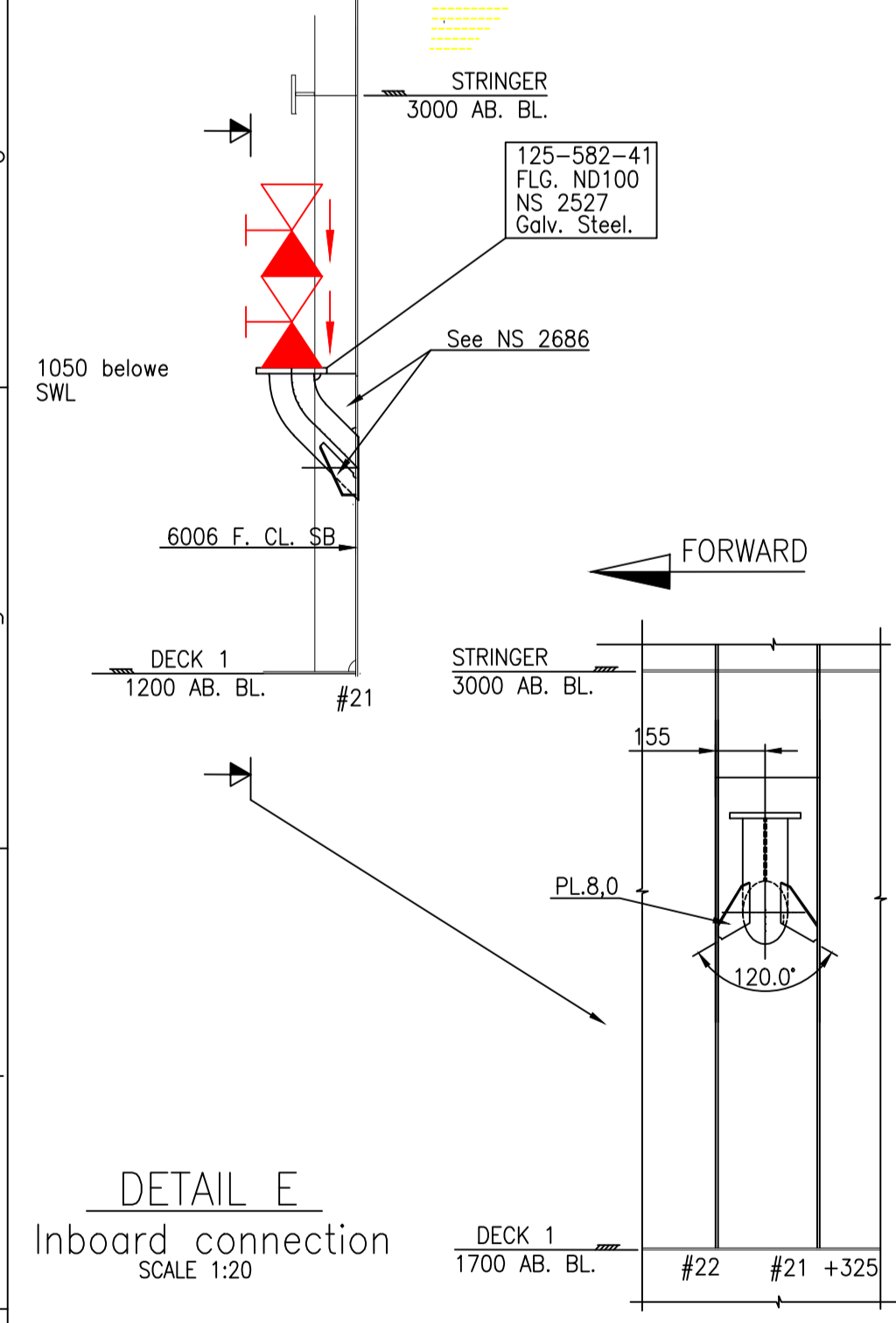


PLAN BELOW DECK 2



Abp. Num.	dia.	Pipe dim.	Material	Det. drawing.	System.	Sea outlets.			
						Longitudinal (X)	Transverse (Y)	Vertical (Z)	
40-581-50	40	448.3x7.6	Galv. st.		Sanitary supply	475 tow. #42	2225 SB	1900 AB/BL	2000 Below Deck 2, 4500 AB/BL
40-581-54	40	448.3x7.6	Galv. st.		Sanitary supply	475 tow. #43	2454 SB	1900 AB/BL	2000 Below Deck 2, 4500 AB/BL
40-581-58	40	448.3x7.6	Galv. st.		Sanitary discharge	200 tow. #32	2022 SB	1750 AB/BL	2700 Below Deck 2, 4500 AB/BL
125-582-41	125	476.1x10.0	Galv. st.		Sanitary discharge	495 tow. #16	6006 SB	3117 AB/BL	1388 Below Deck 2, 4500 AB/BL
125-582-58	125	476.1x10.0	Galv. st.		Sanitary discharge	110 tow. #17	6006 PS	3112 AB/BL	1388 Below Deck 2, 4500 AB/BL
125-582-60	125	476.1x10.0	Galv. st.		Sanitary discharge	110 tow. #17	6006 PS	3112 AB/BL	1388 Below Deck 2, 4500 AB/BL
80-803-01	80	488.9x8.0	Galv. st.		Drain	200 tow. #27	6006 PS	2050 AB/BL	2450 Below Deck 2, 4500 AB/BL
80-803-02	80	488.9x8.0	Galv. st.		Drain	200 tow. #27	6006 PS	2050 AB/BL	2450 Below Deck 2, 4500 AB/BL
80-803-03	80	488.9x8.0	Galv. st.		Drain	200 tow. #27	6006 PS	2050 AB/BL	2450 Below Deck 2, 4500 AB/BL
80-803-04	80	488.9x8.0	Galv. st.		Drain	200 tow. #27	6006 PS	2050 AB/BL	2450 Below Deck 2, 4500 AB/BL
80-803-05	80	488.9x8.0	Galv. st.		Drain	200 tow. #27	6006 PS	2050 AB/BL	2450 Below Deck 2, 4500 AB/BL
80-803-06	80	488.9x8.0	Galv. st.		Drain	200 tow. #27	6006 PS	2050 AB/BL	2450 Below Deck 2, 4500 AB/BL
80-803-07	80	488.9x8.0	Galv. st.		Drain	200 tow. #27	6006 PS	2050 AB/BL	2450 Below Deck 2, 4500 AB/BL
80-803-08	80	488.9x8.0	Galv. st.		Drain	200 tow. #27	6006 PS	2050 AB/BL	2450 Below Deck 2, 4500 AB/BL
80-803-09	80	488.9x8.0	Galv. st.		Drain	200 tow. #27	6006 PS	2050 AB/BL	2450 Below Deck 2, 4500 AB/BL
80-803-10	80	488.9x8.0	Galv. st.		Drain	200 tow. #27	6006 PS	2050 AB/BL	2450 Below Deck 2, 4500 AB/BL
80-803-11	80	488.9x8.0	Galv. st.		Drain	200 tow. #27	6006 PS	2050 AB/BL	2450 Below Deck 2, 4500 AB/BL
80-803-12	80	488.9x8.0	Galv. st.		Drain	200 tow. #27	6006 PS	2050 AB/BL	2450 Below Deck 2, 4500 AB/BL
80-803-13	80	488.9x8.0	Galv. st.		Drain	200 tow. #27	6006 PS	2050 AB/BL	2450 Below Deck 2, 4500 AB/BL
80-803-14	80	488.9x8.0	Galv. st.		Drain	200 tow. #27	6006 PS	2050 AB/BL	2450 Below Deck 2, 4500 AB/BL
80-803-15	80	488.9x8.0	Galv. st.		Drain	200 tow. #27	6006 PS	2050 AB/BL	2450 Below Deck 2, 4500 AB/BL
80-803-16	80	488.9x8.0	Galv. st.		Drain	200 tow. #27	6006 PS	2050 AB/BL	2450 Below Deck 2, 4500 AB/BL
80-803-17	80	488.9x8.0	Galv. st.		Drain	200 tow. #27	6006 PS	2050 AB/BL	2450 Below Deck 2, 4500 AB/BL
80-803-18	80	488.9x8.0	Galv. st.		Drain	200 tow. #27	6006 PS	2050 AB/BL	2450 Below Deck 2, 4500 AB/BL
80-803-19	80	488.9x8.0	Galv. st.		Drain	200 tow. #27	6006 PS	2050 AB/BL	2450 Below Deck 2, 4500 AB/BL
80-803-20	80	488.9x8.0	Galv. st.		Drain	200 tow. #27	6006 PS	2050 AB/BL	2450 Below Deck 2, 4500 AB/BL
80-803-21	80	488.9x8.0	Galv. st.		Drain	200 tow. #27	6006 PS	2050 AB/BL	2450 Below Deck 2, 4500 AB/BL
80-803-22	80	488.9x8.0	Galv. st.		Drain	200 tow. #27	6006 PS	2050 AB/BL	2450 Below Deck 2, 4500 AB/BL
80-803-23	80	488.9x8.0	Galv. st.		Drain	200 tow. #27	6006 PS	2050 AB/BL	2450 Below Deck 2, 4500 AB/BL
80-803-24	80	488.9x8.0	Galv. st.		Drain	200 tow. #27	6006 PS	2050 AB/BL	2450 Below Deck 2, 4500 AB/BL
80-803-25	80	488.9x8.0	Galv. st.		Drain	200 tow. #27	6006 PS	2050 AB/BL	2450 Below Deck 2, 4500 AB/BL
80-803-26	80	488.9x8.0	Galv. st.		Drain	200 tow. #27	6006 PS	2050 AB/BL	2450 Below Deck 2, 4500 AB/BL
80-803-27	80	488.9x8.0	Galv. st.		Drain	200 tow. #27	6006 PS	2050 AB/BL	2450 Below Deck 2, 4500 AB/BL
80-803-28	80	488.9x8.0	Galv. st.		Drain	200 tow. #27	6006 PS	2050 AB/BL	2450 Below Deck 2, 4500 AB/BL
80-803-29	80	488.9x8.0	Galv. st.		Drain	200 tow. #27	6006 PS	2050 AB/BL	2450 Below Deck 2, 4500 AB/BL
80-803-30	80	488.9x8.0	Galv. st.		Drain	200 tow. #27	6006 PS	2050 AB/BL	2450 Below Deck 2, 4500 AB/BL
80-803-31	80	488.9x8.0	Galv. st.		Drain	200 tow. #27	6006 PS	2050 AB/BL	2450 Below Deck 2, 4500 AB/BL
80-803-32	80	488.9x8.0	Galv. st.		Drain	200 tow. #27	6006 PS	2050 AB/BL	2450 Below Deck 2, 4500 AB/BL
80-803-33	80	488.9x8.0	Galv. st.		Drain	200 tow. #27	6006 PS	2050 AB/BL	2450 Below Deck 2, 4500 AB/BL
80-803-34	80	488.9x8.0	Galv. st.		Drain	200 tow. #27	6006 PS	2050 AB/BL	2450 Below Deck 2, 4500 AB/BL
80-803-35	80	488.9x8.0	Galv. st.		Drain	200 tow. #27	6006 PS	2050 AB/BL	2450 Below Deck 2, 4500 AB/BL
80-803-36	80	488.9x8.0	Galv. st.		Drain	200 tow. #27	6006 PS	2050 AB/BL	2450 Below Deck 2, 4500 AB/BL
80-803-37	80	488.9x8.0	Galv. st.		Drain	200 tow. #27	6006 PS	2050 AB/BL	2450 Below Deck 2, 4500 AB/BL
80-803-38	80	488.9x8.0	Galv. st.		Drain	200 tow. #27	6006 PS	2050 AB/BL	2450 Below Deck 2, 4500 AB/BL
80-803-39	80	488.9x8.0	Galv. st.		Drain	200 tow. #27	6006 PS	2050 AB/BL	2450 Below Deck 2, 4500 AB/BL
80-803-40	80	488.9x8.0	Galv. st.		Drain	200 tow. #27	6006 PS	2050 AB/BL	2450 Below Deck 2, 4500 AB/BL
80-803-41	80	488.9x8.0	Galv. st.		Drain	200 tow. #27	6006 PS	2050 AB/BL	2450 Below Deck 2, 4500 AB/BL
80-803-42	80	488.9x8.0	Galv. st.		Drain	200 tow. #27	6006 PS	2050 AB/BL	2450 Below Deck 2, 4500 AB/BL
80-803-43	80	488.9x8.0	Galv. st.		Drain	200 tow. #27	6006 PS	2050 AB/BL	2450 Below Deck 2, 4500 AB/BL
80-803-44	80	488.9x8.0	Galv. st.		Drain	200 tow. #27	6006 PS	2050 AB/BL	2450 Below Deck 2, 4500 AB/BL
80-803-45	80	488.9x8.0	Galv. st.		Drain	200 tow. #27	6006 PS	2050 AB/BL	2450 Below Deck 2, 4500 AB/BL
80-803-46	80	488.9x8.0	Galv. st.		Drain	200 tow. #27	6006 PS	2050 AB/BL	2450 Below Deck 2, 4500 AB/BL
80-803-47	80	488.9x8.0	Galv. st.		Drain	200 tow. #27	6006 PS	2050 AB/BL	2450 Below Deck 2, 4500 AB/BL
80-803-48	80	488.9x8.0	Galv. st.		Drain	200 tow. #27	6006 PS	2050 AB/BL	2450 Below Deck 2, 4500 AB/BL
80-803-49	80	488.9x8.0	Galv. st.		Drain	200 tow. #27	6006 PS	2050 AB/BL	2450 Below Deck 2, 4500 AB/BL
80-803-50	80	488.9x8.0	Galv. st.		Drain	200 tow. #27	6006 PS	2050 AB/BL	2450 Below Deck 2, 4500 AB/BL



NOTES:

- All inboard connections are shown on details A,B,C,D,E,F,G,H,I,J,K,L + on separate SCD Chest drawings.
- Drain pipe overboard connections are shown in typical section detail. Isometric drawings will be issued.

REF. DRAWINGS:

- 62-581-101 Sanitary supply system.
- 62-582-101 Sanitary discharge system.
- 62-720-101 Cooling water system.
- 62-803-101 Bilge system.
- 62-804-101 External Drain system.
- 62-262-102 Arrangement of Sea Chests

BUREAU VERITAS Section ...25182Y... REVIEWED
only for parts concerning Classification.
All particulars not shown on this drawing and concerning Classification to be as per Rules.
Turku, 05-Dec-2014
(Electronic document)
The plan approval office

REV. NO.	REVISION	DATE	APPR.
5	SWL corrected	27.11.14	PMT
4	Pipe line 125-582-60 connected to 125-582-59, overboard connection detail A eliminated. Detail B relocated.	24.11.14	SL
3	Pipe 125-582-41 and 125-582-59 moved	04.09.14	SL
2	Pipe 80-821-55 and 80-821-56 added	21.05.14	SS
1	Updated according to comments/moot changes.	25.04.14	DL
0	Issued for production	21.03.14	DL

WESTERN BALTJA SHIPBUILDING

MULTI MARITIME

CLIENT: WESTERN BALTJA SHIPBUILDING
TITLE: Overboard connections
SCALE: 1:100
DRAWN: 17.03.14
CK'D: 21.03.14
APPR.:
PROJECT NO.: YARD NO.:
SHEET NO.: 62
SFT: 262
PHONE: 47 57825000
FAX: 47 57828451
E-mail: info@multimaritime.no

62-262-110 5